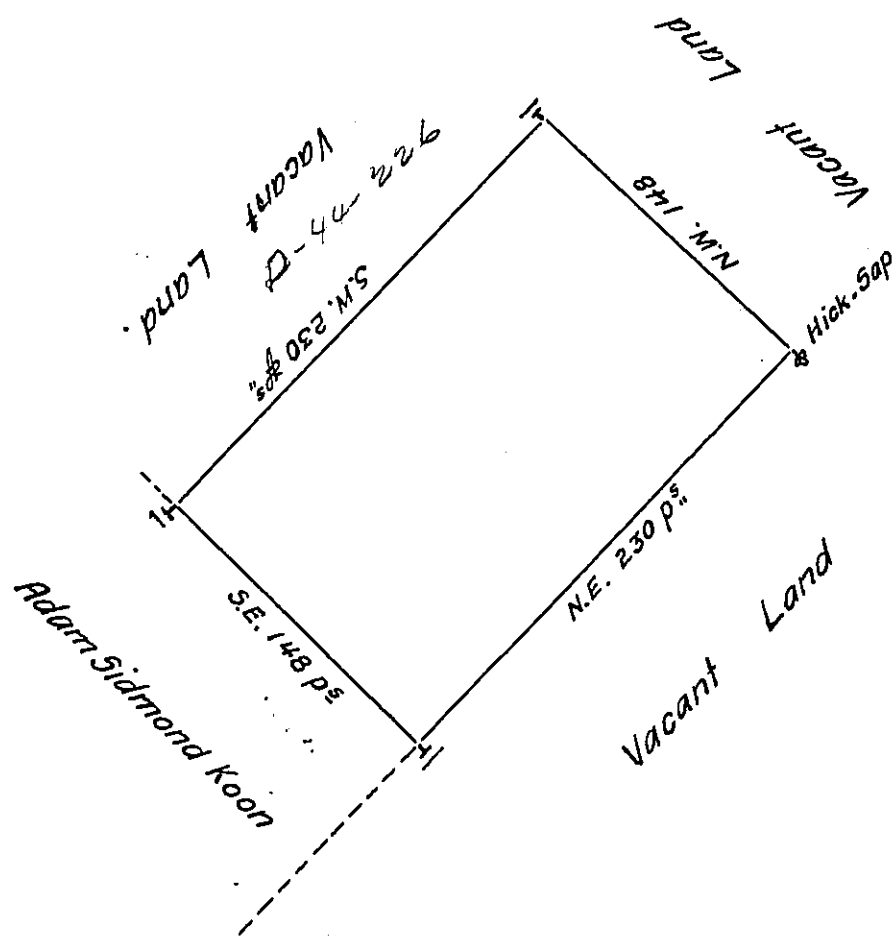


FORM No. 1.



By Virtue of a Warrant from the Propriet<sup>r</sup>. Dated the 29 day of Ap<sup>r</sup> 1738 Surveyed  
 the Twenty Second day of September 1738 to Richard Lundy the above described tract of  
 Land Situate near Maiden Creek in the County of Philad<sup>a</sup>. Containing two hundred  
 Acres & one hundred & thirteen perches with allowance of Six P<sup>ts</sup>.

Edw<sup>d</sup>. Scull.

IN TESTIMONY that the above is a copy of the original remaining on file in  
 the Department of Internal Affairs of Pennsylvania, made  
 conformably to an Act of Assembly approved the 16th day of  
 February, 1833, I have hereunto set my Hand and caused  
 the Seal of said Department to be affixed at Harrisburg,  
 this twenty-seventh day of April 1909.

*Henry Howells*  
 Secretary of Internal Affairs.